

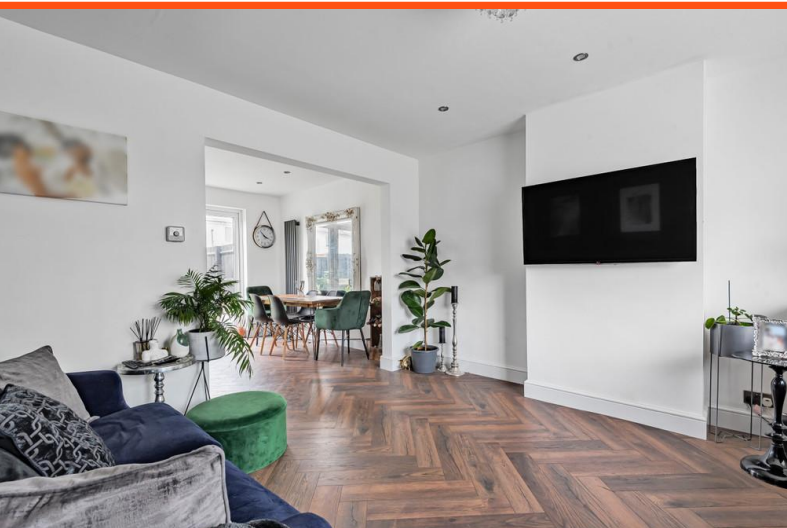


Woodcroft, London, SE9 3EQ

Guide Price £500,000 - £525,000

COCKBURN
ESTATE AND LETTINGS AGENTS

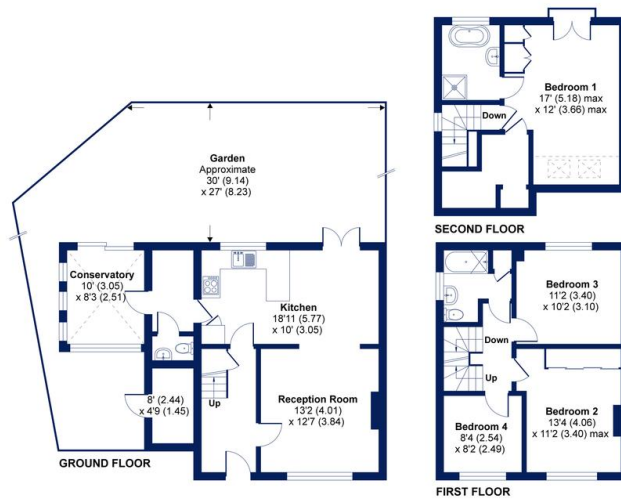
Guide Price £500,000 - £525,000. Offered to the market in excellent condition throughout this extended four bedroom house is ideal for the growing family. Comprising large reception room, open plan kitchen/dining room, utility room, downstairs w/c and conservatory to ground floor. On the first floor you have three large bedrooms and family bathroom with a further 4th bedroom in the loft conversion with en-suite shower room and walk in wardrobe. To the rear of the property, you have a rare large private wrap garden giving you plenty of outside space. Close by you have excellent transport links keeping you connected with London, Eltham and Bromley.





Woodcroft, London

Approximate Area = 1364 sq ft / 127 sq m
 Including Limited Use Area(s) = 29 sq ft / 3 sq m
 Outbuilding = 35 sq ft / 3 sq m
 Total = 1428 sq ft / 133 sq m
 For identification only - Not to scale



Floor plan produced in accordance with RICS Property Measurement Standards incorporating International Property Measurement Standards (IPMS2 Residential). © richcom 2021. Produced for Cockburn Estates Agents. REF: 786840

