

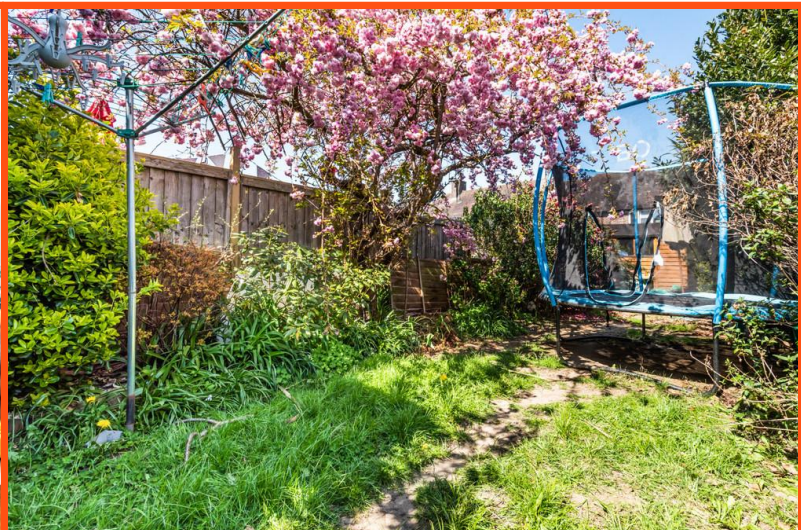
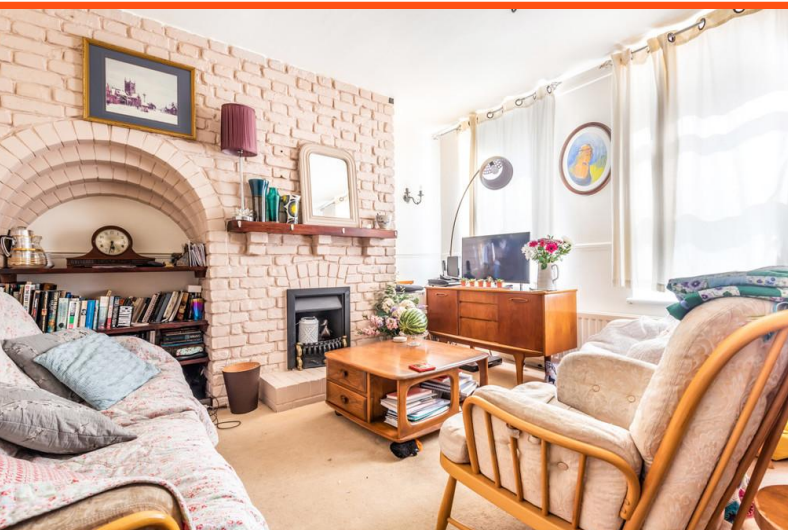


Castlecombe Road, London, SE9 4AS

Asking Price £340,000

COCKBURN
ESTATE AND LETTINGS AGENTS

****CHAIN FREE BUYERS ONLY ****Three bedroom terrace house situated on a quiet road comprising three bedrooms, fitted kitchen, large reception room and downstairs bathroom. To the rear there is a private garden and on street parking to the front. Close by you have excellent schools and transport links keeping you well connected with London, Bromley and Eltham.



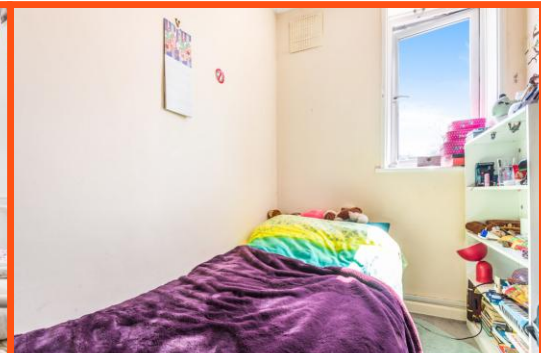
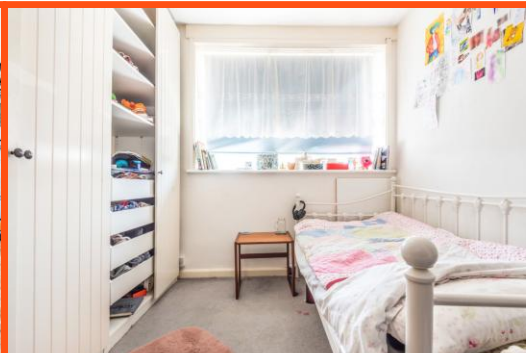
Castlecombe Road, London, SE9

Approximate Area = 716 sq ft / 66.5 sq m

For identification only - Not to scale



Floor plan produced in accordance with RICS Property Measurement Standards incorporating International Property Measurement Standards (IPMS2 Residential). © richcom 2021. Produced for Goodburn Estates Agents. REF: 711988



Cockburn EA
38 Mottingham Road, Mottingham,
London, SE9 4QR

t: **020 8857 8857**
cockburn-online.co.uk

IMPORTANT: we would like to inform prospective purchasers that these sales particulars have been prepared as a general guide only. A detailed survey has not been carried out, nor the services, appliances and fittings tested. Room sizes should not be relied upon for furnishing purposes and are approximate. If floor plans are included, they are for guidance only and illustration purposes only and may not be to scale. If there are any important matters likely to affect your decision to buy, please contact us before viewing the property.