

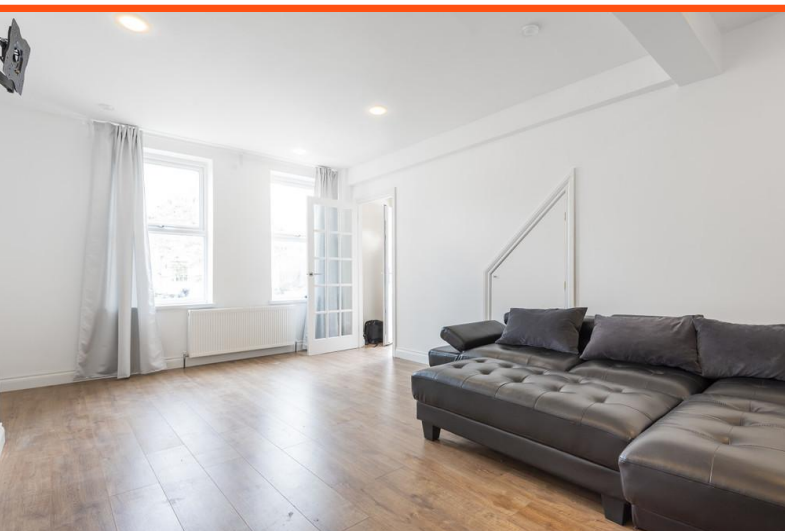


Beaconsfield Road, London, SE9 4DT

Guide Price of £400,000 - £425,000

COCKBURN
ESTATE AND LETTINGS AGENTS

Offered to the market CHAIN FREE and in excellent decorative order this extended three bedroom house is ideal for first time buyer or buy to let investors. Now comprising large reception room, fitted kitchen, three bedrooms and upstairs family bathroom. To the rear there is a large private garden and off street parking to the front with potential to extend the property (stgrpc). Close by you have excellent bus links keeping you well connected with both Eltham and Bromley.



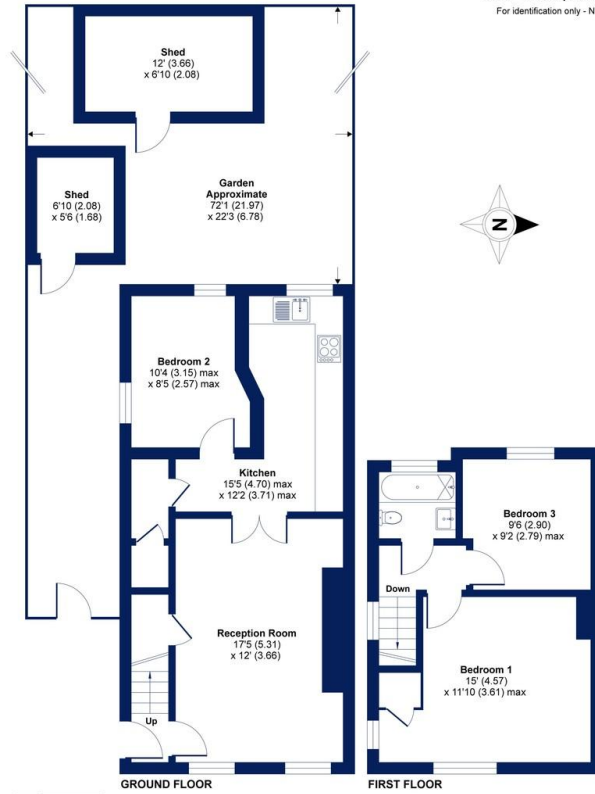
Beaconsfield Road, London, SE9

Approximate Area = 829 sq ft / 77 sq m

Outbuildings = 120 sq ft / 11 sq m

Total = 949 sq ft / 88 sq m

For identification only - Not to scale



Floor plan produced in accordance with RICS Property Measurement Standards incorporating International Property Measurement Standards (IPMS2 Residential). Produced for Cockburn Estates Agents REF: 603013. © richrecom 2020.

