



Orchard Rise West, Sidcup, DA15 8TA

Asking Price of £575,000

COCKBURN
ESTATE AND LETTINGS AGENTS

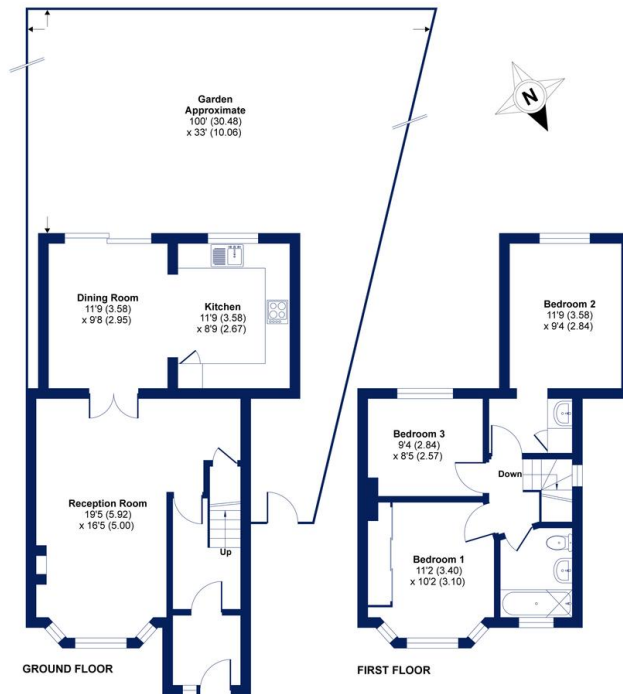
Offered to the market in fantastic decorative order throughout this extended three bedroom house is ideal for the growing family. Comprising through reception room, extended kitchen/dining area, three double bedrooms and family bathroom. To the front there is off street parking and a large private garden to the rear. This property comes with planning permission already granted for a self contained bungalow to be build at the end of the garden. Close by you have local shops and excellent bus links keeping you well connected with both Bexleyheath and Eltham.



Orchard Rise West, Sidcup, DA15

Approximate Area = 996 sq ft / 93 sq m

For identification only - Not to scale



Floor plan produced in accordance with RICS Property Measurement Standards incorporating International Property Measurement Standards (IPMS2 Residential). Produced for Cockburn Estates Agents. REF: 693971 © richcom 2021

