



Court Farm Road, Mottingham

Rent: £2,000pcm

COCKBURN
ESTATE AND LETTINGS AGENTS



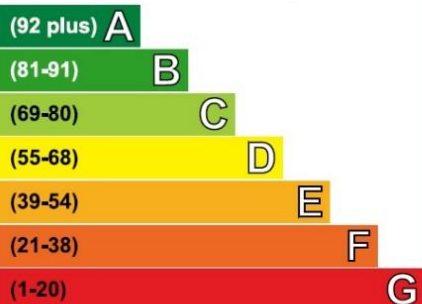
**** Available Immediately ****

This stunning six bedroom house is situated on a popular road in Mottingham. The property benefits from a beautiful, spacious kitchen, done up to an extremely modern standard, large living room, downstairs shower room and utility room. Upstairs you'll find five double bedrooms, and a sixth small single bedroom/study room, and two more shower rooms.
Call now to arrange your viewing!



Energy Efficiency Rating

Very energy efficient - lower running costs



Not energy efficient - higher running costs

Current	Potential
57	76

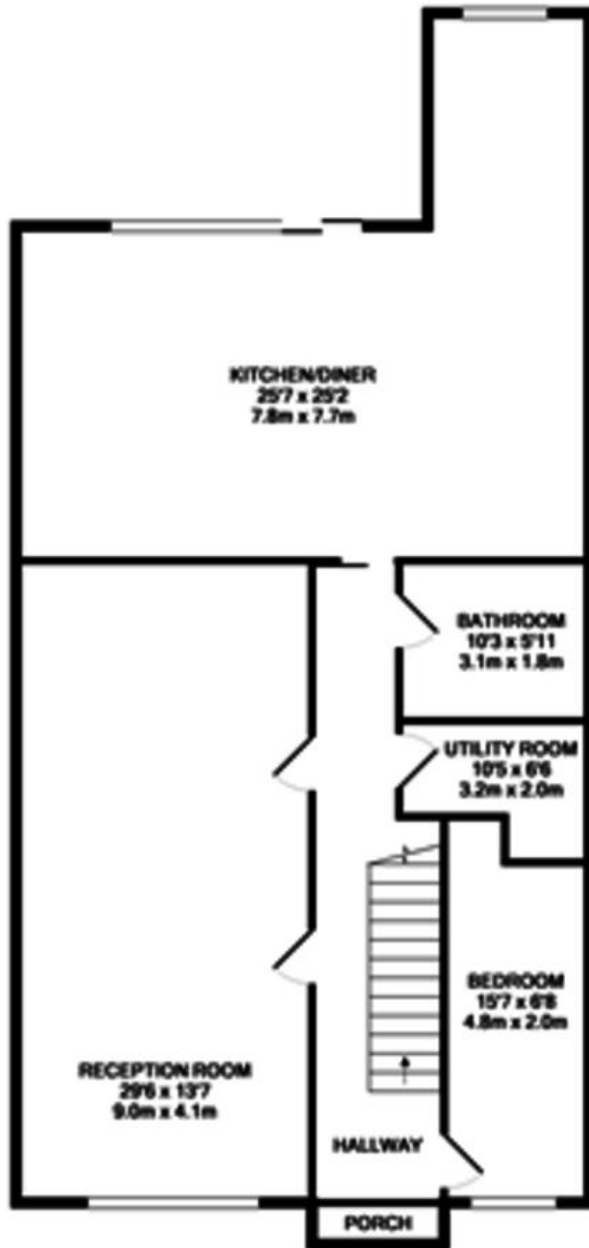
The graph shows the current energy efficiency of your home.

The higher the rating the lower your fuel bills are likely to be.

The potential rating shows the effect of undertaking the recommendations on page 3.

The average energy efficiency rating for a dwelling in England and Wales is band D (rating 60).

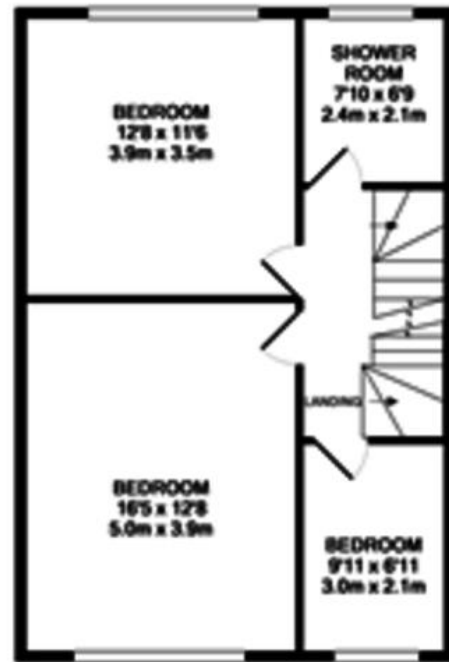
The EPC rating shown here is based on standard assumptions about occupancy and energy use and may not reflect how energy is consumed by individual occupants.



GROUND FLOOR
APPROX. FLOOR
AREA 1263 SQ.FT.
(117.4 SQ.M.)

TOTAL APPROX. FLOOR AREA 2306 SQ.FT. (214.2 SQ.M.)

While every attempt has been made to ensure the accuracy of the floor plan contained here, measurements of doors, windows, rooms and any other items are approximate and no responsibility is taken for any error, omission, or mis-statement. This plan is for illustrative purposes only and should be used as such by any prospective purchaser. The services, systems and appliances shown have not been tested and no guarantee as to their operability or efficiency can be given.
Made with Metropix 02/09



1ST FLOOR
APPROX. FLOOR
AREA 581 SQ.FT.
(54.0 SQ.M.)



2ND FLOOR
APPROX. FLOOR
AREA 461 SQ.FT.
(42.8 SQ.M.)

Cockburn EA
352 Footscray Road, New Eltham, London, SE9 2EB
t: 020 8859 8590

cockburn-online.co.uk

COCKBURN
ESTATE AND LETTINGS AGENTS

IMPORTANT: we would like to inform prospective purchasers that these sales particulars have been prepared as a general guide only. A detailed survey has not been carried out, nor the services, appliances and fittings tested. Room sizes should not be relied upon for furnishing purposes and are approximate. If floor plans are included, they are for guidance only and illustration purposes only and may not be to scale. If there are any important matters likely to affect your decision to buy, please contact us before viewing the property.