



Hartsmead Road, Mottingham, SE9

Rent: £1,600 per calendar month

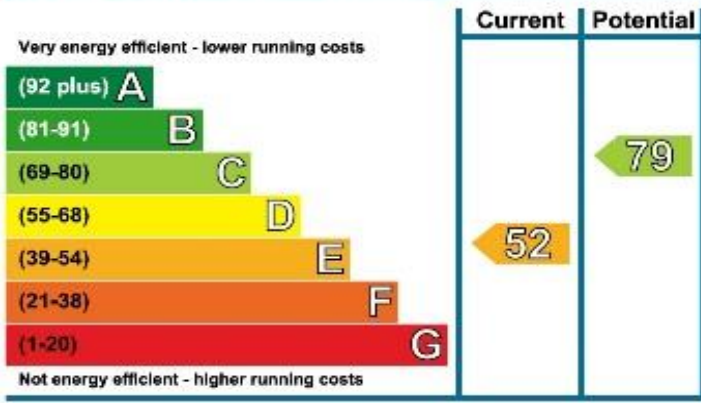
COCKBURN
ESTATE AND LETTINGS AGENTS



Hartsmead Road, Mottingham, SE9

****5 BEDROOM HOUSE**** This spacious 5 bedroom semi-detached property is located in a sought after location within walking distance of Mottingham train station. The home benefits from; 3 double bedrooms, 2 good sized single bedrooms, upstairs family bathroom, 2 separate reception rooms, downstairs shower room, large kitchen, large rear garden, garage and a driveway to the front. Available immediately, call Cockburn on 0208 859 8590 to view.

Energy Efficiency Rating

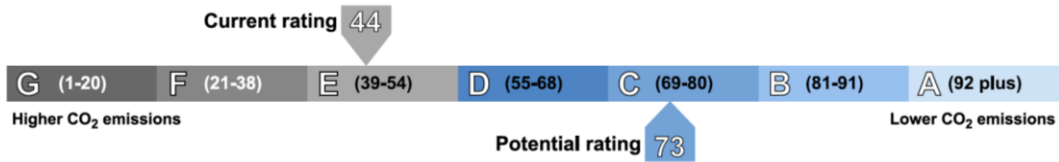


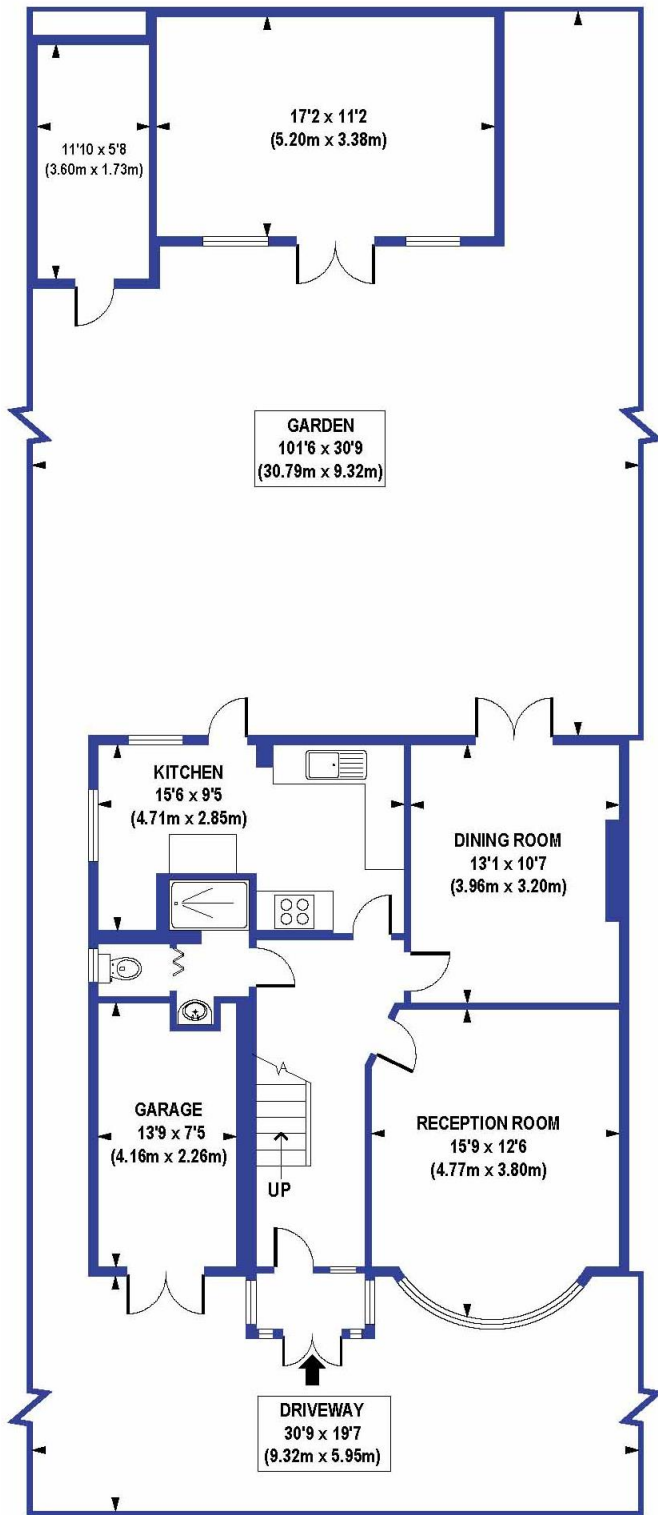
The graph shows the current energy efficiency of your home.

The higher the rating the lower your fuel bills are likely to be.

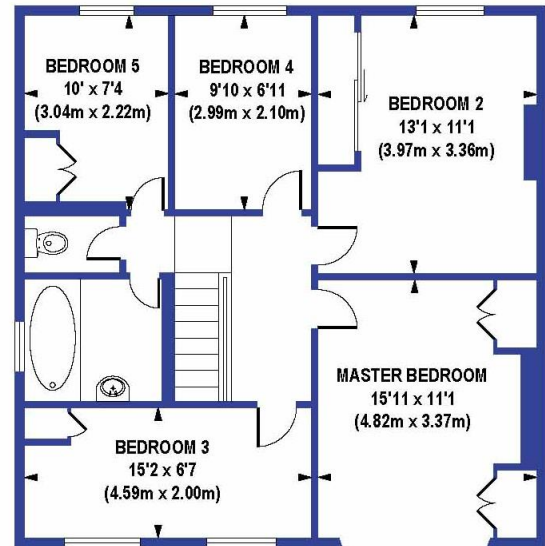
The potential rating shows the effect of undertaking the recommendations on page 3.

The average energy efficiency rating for a dwelling in England and Wales is band D (rating 60).





GROUND FLOOR
GROSS INTERNAL
FLOOR AREA 621 SQ FT



FIRST FLOOR
GROSS INTERNAL
FLOOR AREA 696 SQ FT

Cockburn EA
352 Footscray Road, New Eltham, London, SE9 2EB
t: 020 8859 8590

cockburn-online.co.uk

COCKBURN
ESTATE AND LETTINGS AGENTS

IMPORTANT: we would like to inform prospective purchasers that these sales particulars have been prepared as a general guide only. A detailed survey has not been carried out, nor the services, appliances and fittings tested. Room sizes should not be relied upon for furnishing purposes and are approximate. If floor plans are included, they are for guidance only and illustration purposes only and may not be to scale. If there are any important matters likely to affect your decision to buy, please contact us before viewing the property.